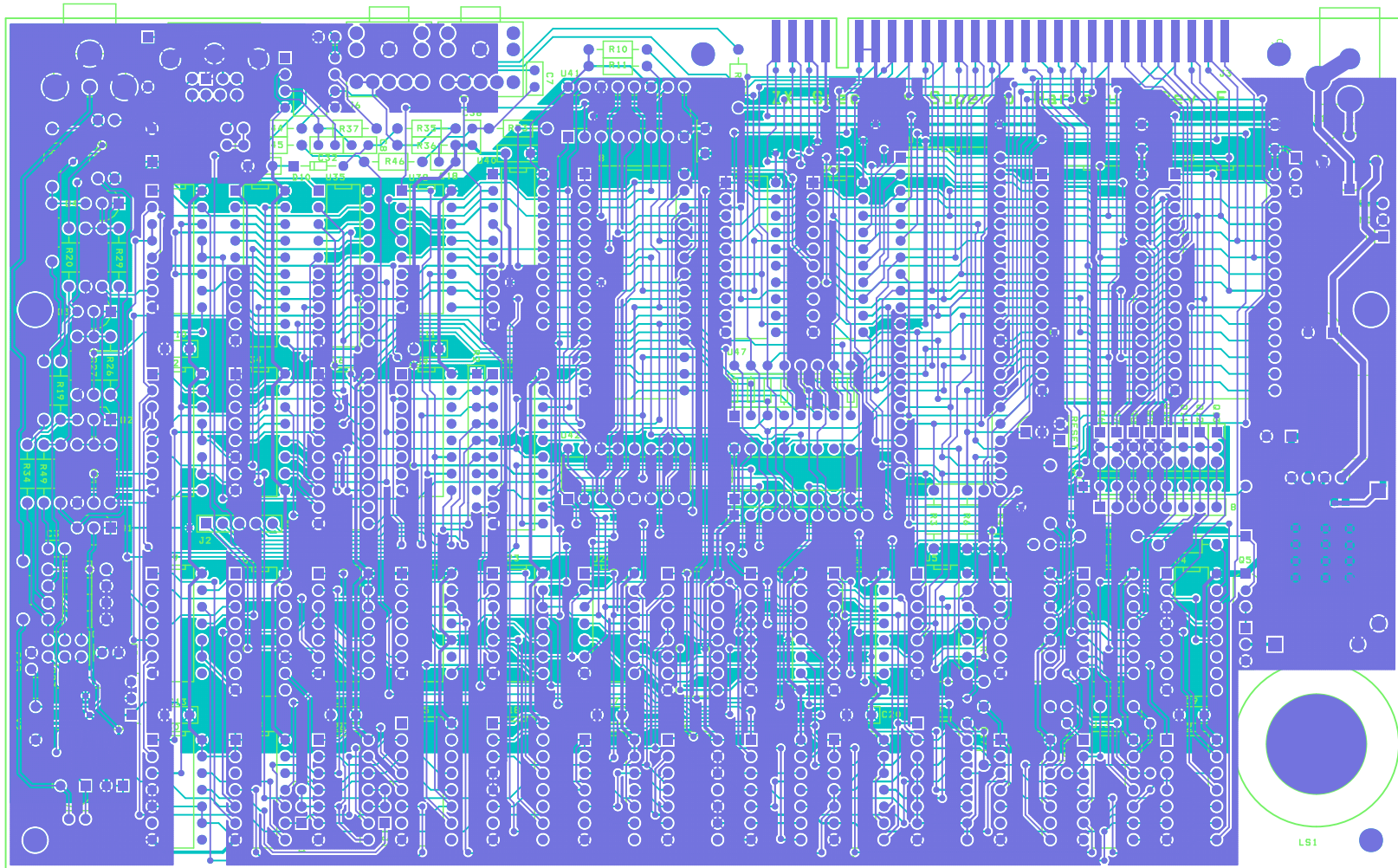
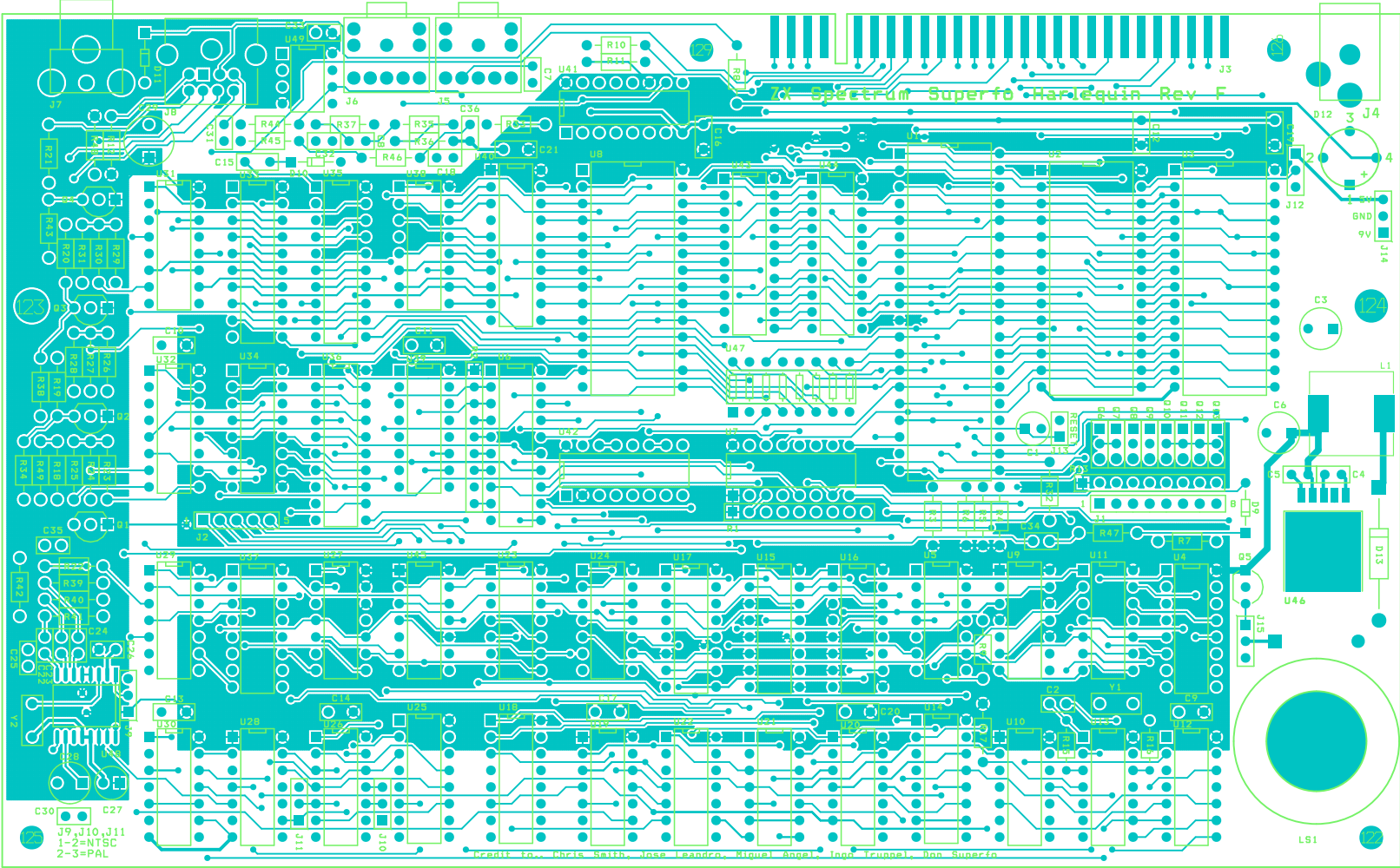


J9, J10, J11
 2-3 = PAL
 Y2
 3.58MHz = NTSC
 4.43MHz = PAL



α Spectrum Superfo Harlequin Rev F

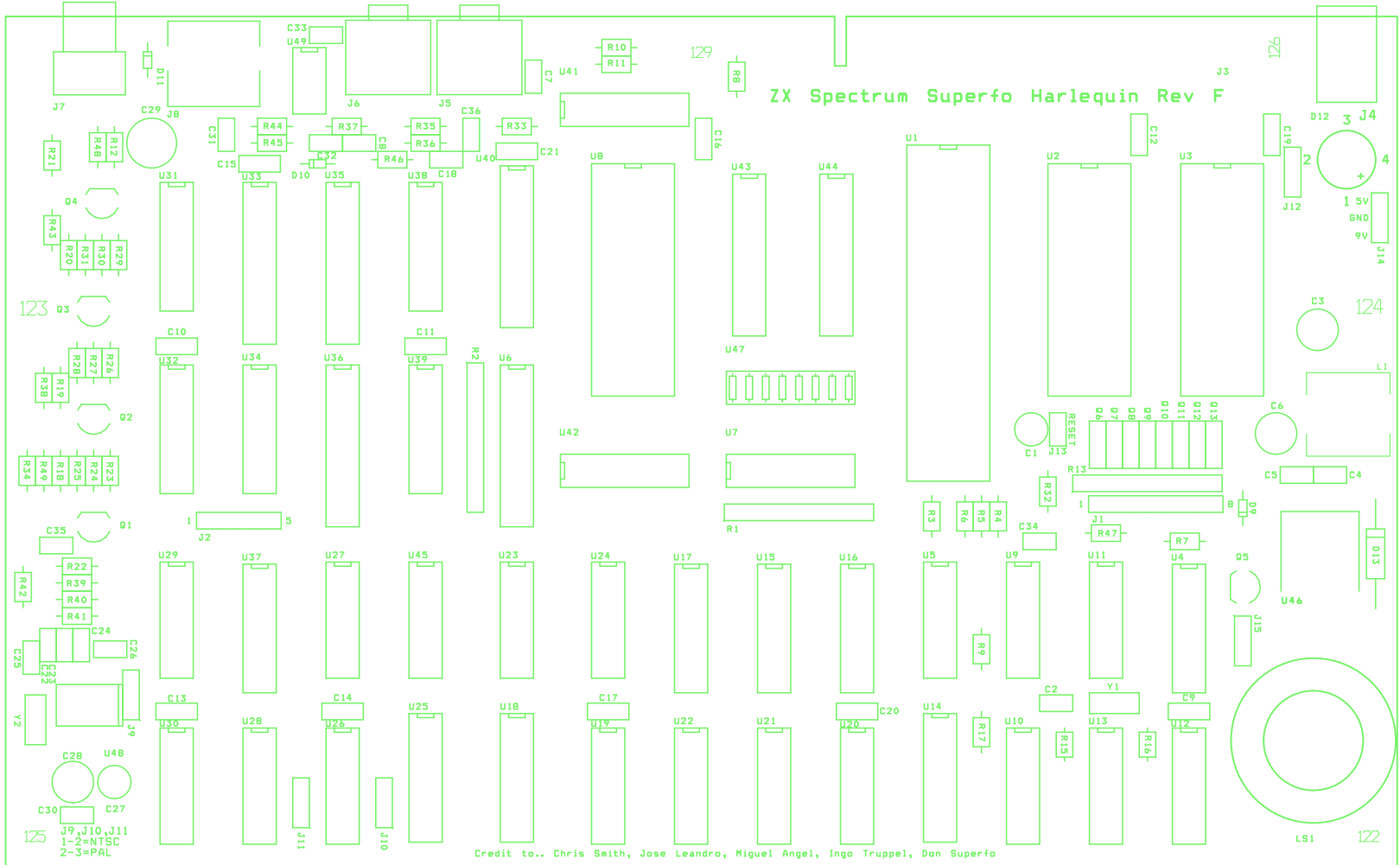


J9, J10, J11
1-2=NTSC
2-3=PAL

© 1988 by Herb Smith, Jose Leandro, Rigue Angel, Ingo Truppel, Don Superfo

LS1

ZX Spectrum Superfo Harlequin Rev F



Credit to.. Chris Smith, Jose Leandro, Miguel Angel, Ingo Truppel, Don Superfo

LS1

122